

DEPARTMENT OF THE ARMY TECHNICAL MANUAL

**GENERAL SUPPORT MAINTENANCE REPAIR PARTS AND
SPECIAL TOOLS LISTS (INCLUDING DEPOT MAINTENANCE
REPAIR PARTS AND SPECIAL TOOLS)
TEST SET, ROTARY ACTUATOR TS-1663/ASW-12(V) (FSN 6625-973-4185)
AND
FIXTURE, TEST, ROTARY ACTUATOR MX-3719/ASW-12(V) (FSN 6625-987-8530)**

Headquarters, Department of the Army, Washington, D.C.
14 March 1975

Current as of December 1974

	Paragraph	Page
Section I. INTRODUCTION		
Scope	1-1	2
General	1-2	2
Explanation of columns	1-3	2
Special information	1-4	4
Location of repair parts	1-5	4
Abbreviations (Not applicable)	1-6	5
Reporting of equipment publication improvements	1-7	5
II. REPAIR PARTS LIST		6
III. SPECIAL TOOLS TEST AND SUPPORT EQUIPMENT (Not applicable)		
IV. INDEX- FEDERAL STOCK NUMBER AND REFERENCE NUMBER CROSS- REFERENCE TO FIGURE AND ITEM NUMBER		1 5

*This manual supersedes TM 11-6625-516-45P 18 November 1963.

Section I INTRODUCTION

1-1. Scope

This manual lists repair parts and special tools required for the performance of general support and depot maintenance of the TS-1663/ASW-12(V) and MX-3719/ASW-12(V). The PCCN for the TS-1663 ASW-12(V) is GANABZ and GANACA for the MX-3719/ASW-12(V).

NOTE

So parts authorized for stockage at direct support.

1-2. General

This repair parts and special tools list is divided into the following sections:

a Repair Parts List - Section II A list of repair parts authorized for the performance of maintenance at the general support, and depot level. This repair parts list is arranged in alphabetical order.

b Special Tools, Test and Support Equipment - Section III Not applicable

c Index - Federal Stock Number and Reference Number Cross-Reference to Figure and Item Number - Section IV A list, in ascending numerical sequence, of all Federal stock numbers appearing in the listings, followed by a list, in alphanumeric sequence, of all reference numbers appearing in the listings Federal stock number and reference numbers are cross-reference to each illustration figure and item number or reference designation appearance

1-3. Explanation of Columns

The following provides an explanation of columns found in the tabular list.

a Source, Maintenance, and Recoverability Codes (SMR)

(1) *Source code.* Indicates the manner of acquiring support items for maintenance, repair, or overhaul of end items. Source codes are —

<i>Code</i>	<i>Explanation</i>
PA —	Item procured and stocked for anticipated or known usage.
PB —	Item procured and stocked for insurance purposes because essentiality dictates that a minimum quantity be available in the supply systems.
PC —	Item procured and stocked and which otherwise would be coded PA except that it is deteriorative in nature.
PD —	Support item, excluding support equipment procured for initial issue or outfitting and stocked only for subsequent or additional initial issues or outfittings. Not subject to automatic replenishment
PE —	Support equipment procured and stocked for initial issue or outfitting to specified maintenance repair activities
PF —	Support equipment which will not be stocked but which will be centrally procured on demand
PG —	Item procured and stocked to provide for sustained support for the life of the equipment. It is applied to an item peculiar to the equipment which because of probable discontinuance or shutdown of production facilities would prove uneconomical to reproduce at a later time
KD —	An item of depot overhaul repair kit and not purchased separately. Depot kit defined as a kit that provides items required at the time of overhaul or repair
KF —	An item of a maintenance kit and not purchased separately. Maintenance kit defined as a kit that provides an item that can be replaced at organizational or direct support or general support levels of maintenance
KB —	Item included in both a depot overhaul repair kit and a maintenance kit.
MO —	Item to be manufactured or fabricated at organizational level
MF —	Item to be manufactured or fabricated at direct support maintenance level
MH —	Item to be manufactured or fabricated at general support maintenance level
MD —	Item to be manufactured or fabricated at depot maintenance level.
AO —	Item to be assembled at organizational level.
AF —	Item to be assembled at direct support maintenance level.
AH —	Item to be assembled at general support maintenance level
AD —	Item to be assembled at depot maintenance level

Code

Explanation

- XA** — Item is not procured or stocked because the requirements for the item will result in the replacement of the next higher assembly.
- XB** — Item is not procured or stocked. If not available through salvage, requisition.
- X C** - Installation drawing, diagram instruction sheet, field service drawing, that is identified by manufacturers' part number.
- SD** - Support items can be requisitioned with justification.

NOTE

Cannibalization or salvage may be used as a source of supply for any items source coded above except those coded XA and aircraft support items as restricted by AR 700-42.

(2) Maintenance code. Maintenance codes are assigned to indicate the levels of maintenance authorized to USE and REPAIR support items. The maintenance codes are entered in the third and fourth positions of the Uniform SMR Code Format as follows -

(a) Use (third position). The maintenance code entered in the third position indicates the lowest maintenance level authorized to remove, replace, and use the support item. The maintenance code entered in the third position indicates one of the following levels of maintenance.

<i>Code</i>	<i>Application/Explanation</i>
O -	Support item is removed, replaced, used at the organizational level of maintenance.
NOTE	
	A code "C" may be used in this position to denote crew or operator maintenance performed within organizational maintenance.
F -	Support item is removed, replaced, used at the direct support maintenance level.
H -	Support item is removed, replaced. used at the general support maintenance.
D -	Support items that are removed, replaced, used at depot only.

(b) Repair (fourth position). The maintenance code entered in the fourth position indicates whether the item is to be repaired and identifies the lowest maintenance level with the capability to perform complete repair (i.e., all authorized maintenance functions). When a maintenance code is not used a dash (-) sign is entered. For multi-service equipment systems or when a code is entered, this position will contain one of the following maintenance

codes as assigned by the service(s) that require the code -

<i>Code</i>	<i>Application/Explanation</i>
O -	The lowest maintenance level capable of complete repair of the support item is the organizational level
F -	The lowest maintenance level capable of complete repair of the support item IS direct support
H -	The lowest maintenance level capable of complete repair of the support item is general support.
D -	The lowest maintenance level capable of complete repair of the support item is the depot level.
L -	Repair restricted to designated Specialized Repair Activity.
Z -	Non-repairable. No repair is authorized
B -	No repair is authorized. The item may be reconditioned by adjusting, lubricating, etc., at the user level. No parts or special tools are procured for the maintenance of this item.

(3) Recoverability code. Recoverability codes are assigned to support items to indicate the disposition action on unserviceable items. The recoverability code is entered in the fifth position of the uniform SMR Code Format as follows -

<i>Code</i>	<i>Explanation</i>
Z -	Nonrepairable item. When unserviceable, condemn and dispose at the level indicated in the first digit of the maintenance code.
O -	Repairable item. When uneconomically repairable, condemn and dispose at organizational level.
F -	Repairable item. When uneconomically repairable, condemn and dispose at the direct support level.
H -	Repairable item. When uneconomically repairable, condemn and dispose at the general support level.
D -	Repairable item. When beyond lower level repair capability, return to depot. Condemnation and disposal not authorized below depot level.
L -	Repairable item. Repair, condemnation, and disposed not authorized below depot/Specialized Repair Activity level.
A -	Item requires special handling or condemnation procedures because of specific reasons (i.e., precious metal content, high dollar value, critical material or hazardous material).

b. Federal Stock Number. Indicates the Federal stock number assigned to the item.

NOTE

For requisitioning purposes, the Federal stock number must be converted to the National stock number by adding "-00-" after the Federal stock classification (FSC) code (first four digits). For example, FSN 6625553-0142 converts to NSN 6625-00-553-0142.

c. Description. Indicates the Federal item name and a minimum description required to identify the item. The last line indicates the reference number followed by the applicable Federal Supply Code for Manufacturer (FSCM) in parentheses. The FSCM IS used as an element in item identification to designate manufacturer or distributor or Government agency, etc., and is identified in SB 708-42.

d. Unit of Measure (U/M). Indicates the standard or basic quantity by which the listed item is used in performing the actual maintenance function. This measure is expressed by a two-character alphabetical abbreviation; e.g., ea, in, pr, etc., and is the basis used to indicate quantities and allowances in subsequent columns. When the unit of measure differs from the unit of issue, the lowest unit of issue that will satisfy the required units of measure will be requisitioned.

e. Quantity Incorporated in Unit. This column indicates the quantity of the item used in the equipment. Subsequent appearances of the same item in the same assembly are indicated by the letters "REF".

f. 30-Day DS/GS Maintenance Allowances.

NOTE

Allowances in GS column are for GS maintenance only.

(1) The repair parts indicated by asterisk entries in separate allowance columns for GS represent those authorized for use at that category of maintenance to be requisitioned on an "as required" basis, until stockage is based on demand in accordance with AR 710-2.

(2) Allowance quantities are indicated in the special tool lists section for special tools, TMDE, and other support equipment.

g. 1-Year Allowances Per 100 Equipments/Contingency Planning Purposes. Columns intentionally left blank.

h. Depot Maintenance Allowance Per 100 Equipments. This column indicates opposite the first appearance of each item the total quantity authorized for depot maintenance of 100 equipments.

i. Illustration. This column is divided as follows:

(1) Figure number. Indicates the figure number

of the illustration on which the item is shown in TM 11-6625-516-45.

(2) Item number. Indicates the item number or reference designation used to reference the item in the illustration.

1-4. Special Information

a. Usable on codes are included in column 3. Uncoded items are applicable to all models. Identification of the usable on codes used in this publication are -

Code	Used on
A8E	TS-1663/ASW-12(V)
A8F	MX-3719/ASW-12(V)

b. The following publications pertain to the equipment and its components:

TM 11-6625-516-12 Operator and Organizational Maintenance Manual: Test Set, Rotary Actuator TS-1663/ASW-12(V) and Fixture, Test, Rotary Actuator MX-3719/ASW-12(V).

TM 11-6625-516-20P Organizational Maintenance Repair Parts and Special Tools Lists: Test Set, Rotary Actuator TS-1663/ASW-12(V) and Fixture, Test, Rotary Actuator MX-3719/ASW-12(V).

TM 11-6625516-45 Field (Fourth Echelon) and Depot Maintenance Manual: Test Set Rotary Actuator TS-1663/ASW-12(V) and Fixture, Test, Rotary Actuator MX-3719/ASW-12(V).

1-5. Location of Repair Parts

a. This manual contains one cross-reference index (sec IV) to be used to locate a repair part when either the Federal stock number or reference number (manufacturer's part number) is known. The first column in the index is prepared in numerical or alphanumeric sequence in ascending order. The reference numbers (manufacturer's part numbers) are listed immediately following the last listed Federal stock number in the index of Federal stock numbers.

b. When the Federal stock number or reference number is known, follow the procedures given in (1) and (2) below.

(1) Refer to the index of Federal stock numbers (sec IV) and locate the Federal stock number or reference number. The FSN and reference number are cross-referenced to the applicable figure and

item number or reference designation.

(2) Refer to the repair parts list (sec II) and locate the figure number (col 10a) and item number or reference designation (col 10b) as noted in the FSN index.

c. When the figure and item number or reference designation are known, scrutinize columns 10a and 10b of the repair parts list (sec II) until the item is located.

cf. When the FSN, reference number, figure number, item number and reference designation are not known, scrutinize column 3 of the repair parts list (sec II), which is arranged in alphabetical order.

1-6. Abbreviations

Not applicable.

1-7. Reporting of Equipment Publication Improvements

The reporting of errors, omissions, and recommendations for improving this publication by the individual user is encouraged. Reports should be submitted on DA Form 2028 (Recommended Changes to Publications and Blank Forms) and forwarded direct to Commander, US Army Electronics Command, ATTN: AMSEL-MA-AN, Fort Monmouth, NJ 07703.

SECTION II

(1) SMR CODE	(2) FEDERAL STOCK NUMBER	(3) DESCRIPTION REFERENCE NUMBER & MFR CODE USABLE ON CODE		(4) UNIT OF MEAS	(5) QTY INC IN UNIT	(6) 30 DAY DS MAINT ALLOWANCE			(7) 30 DAY GS MAINT ALLOWANCE			(8) 1 YR ALW PER 100 EQUIP CNTGCT	(9) DEPOT MAINT ALW PER 100 EQUIP	(10) ILLUSTRATION	
						(a)	(b)	(c)	(a)	(b)	(c)			(a)	(b)
						1 20	21 50	51 100	1 20	21 50	51 100			FIGURE NO	ITEM NO
XDHZZ		LAPACITOR, FIXED, ELECTROLYTIC C1.....	EA	1				*	*	*			14	C1	
PAHZZ	5940-230-1196	CE41G250K (81349) ABE CLIP, ELECTRICAL NO-REF-DESIG ALLIGATOR, STYLE, 0.406 IN H X 2.00 IN LG X 0.187 IN W; 60C (76545) ABE	EA	4				*	*	*			3		
XDHZZ		CONNECTOR, PLUG, ELECTRICAL P5 6 CONT, 1 CONNECTOR MATING END, STRAIGHT SHAPE, 1.675 IN LG X 0.831 IN DIA O/A W/INCLOSING SHELL; PT06E10-6SSR (96906) ABE	EA	1				*	*	*			18	P5	
XDHZZ		CONNECTOR, PLUG, ELECTRICAL P4 14..... CONT, 1 CONNECTOR MATING END, 1.490 IN LG X 1.000 IN W X 0.400 IN H, O/A; SM14-20SSKGP (95238) ABE	EA	1				*	*	*			18	P4	
XDHZZ		CONNECTOR, PLUG, ELECTRICAL P3 14..... CONT, 1 CONNECTOR MATING END, STRAIGHT SHAPE, 1.960 IN LG X 1.100 IN W X 0.660 IN H O/A; SM14-20PSKGDHC (95238) ABE	EA	1				*	*	*			18	P3	
XDHZZ		CONNECTOR, PLUG, ELECTRICAL P1 15..... CONT, 1 CONNECTOR MATING END, STRAIGHT SHAPE, 1.711 IN LG X 1.125 DIA; PT06E14-15SSR (77820) ABE	EA	1				*	*	*			18	P1	
XDHZZ		CONNECTOR, RECEPTACLE, ELECTRICAL P2... 11 CONT, 1 CONNECTOR MATING END, STRAIGHT SHAPE, 0.875 IN LG X 0.343 IN W X 0.546 IN H; SM11-20S (95238) ABE	EA	1				*	*	*			18	P2	
PACZZ	5920-280-3537	FUSE CARTRIDGE NO-REF-DESIG 100 AMP, 250 V MAX, 1.250 IN LG X 0.250 IN DIA; MS90078-12-1 (81349) ABE	EA	1				*	*	*			50		
XDCZZ		FUSE, CARTRIDGE NO-REF-DESIG 3.0 AMP,.... 250V MAX, 1.250 IN LG X 0.250 DIA; MS90078-12-1 (81349) ABE	EA	1				*	*	*					
PAHZZ	5920-892-9395	FUSEHOLDER NO-REF-DESIG EXTRACTOR TYPE.. 1.250 IN LG X 0.250 DIA O/A; FD1 (81349) ABE	EA	2				*	*	*			3		
XDOZZ		INSULATION SLEEVING ELECTRICAL NO-REF-... DESIG PLAS BLK, 0.062 IN WALL THK, 2.031 IN LG O/A; 628LACK (76545) ABE	EA	4				*	*	*					
XDRZZ		JACK, TIP J2 STD PHONE TIP CONT..... ELEMENT CAP, PLASTIC RED, 1/4 M32 THD, 0.375 IN LG; MS16108-2D (81349) ABE	EA	2				*	*	*			18	J2	
XDRZZ		JACK, TIP J4 STD PHONE TIP CONT..... ELEMENT CAP, PLASTIC RED, 1/4 M32 THD, 0.375 IN LG; MS16108-2D (81349) ABE	EA	REF				*	*	*			18	J4	
XDRZZ		JACK, TIP J1 STD PHONE TIP CONT..... ELEMENT CAP PLASTIC, BLK, 1/4 M32 THD, CONTINUED	EA	29				*	*	*			18	J1	

SECTION II

(1) SMR CODE	(2) FEDERAL STOCK NUMBER	(3) DESCRIPTION REFERENCE NUMBER & MFR CODE USABLE ON CODE		(4) UNIT OF MEAS	(5) QTY INC IN UNIT	(6) 30 DAY DS MAINT ALLOWANCE			(7) 30 DAY GS MAINT ALLOWANCE			(8) 1 YR ALW PER 100 EQUIP CNTGCT	(9) DEPOT MAINT ALW PER 100 EQUIP	(10) ILLUSTRATION	
						(a)	(b)	(c)	(a)	(b)	(c)			(a)	(b)
						1 20	21 50	51 100	1 20	21 50	51 100			FIGURE NO	ITEM NO
XDHZZ		LAPACITOR, FIXED, ELECTROLYTIC	C1.....	EA	1				*	*	*			14	C1
PAHZZ	5940-230-1196	CE41C250K (81349) CLIP, ELECTRICAL NO-REF-DESIG ALLIGATOR, STYLE, 0.406 IN H X 2.00 IN LG X 0.187 IN W; 60C (76545)	A1.....	EA	4				*	*	*			3	
XDHZZ		CONNECTOR, PLUG, ELECTRICAL P5 6 CONT, 1 CONNECTOR MATING END, STRAIGHT SHAPE, 1.675 IN LG X 0.831 IN DIA O/A W/INCLOSING SHELL; PT06E10-6SSR (96906)	P5 6.....	EA	1				*	*	*			18	P5
XDHZZ		CONNECTOR, PLUG, ELECTRICAL P4 14..... CONT, 1 CONNECTOR MATING END, 1.490 IN LG X 1.000 IN W X 0.400 IN H, O/A; SM14-20SSKGP (95238)	P4 14.....	EA	1				*	*	*			18	P4
XDHZZ		CONNECTOR, PLUG, ELECTRICAL P3 14..... CONT, 1 CONNECTOR MATING END, STRAIGHT SHAPE, 1.960 IN LG X 1.100 IN W X 0.660 IN H O/A; SM14-20PSKGDHC (95238)	P3 14.....	EA	1				*	*	*			18	P3
XDHZZ		CONNECTOR, PLUG, ELECTRICAL P1 15..... CONT, 1 CONNECTOR MATING END, STRAIGHT SHAPE, 1.711 IN LG X 1.125 DIA; PT06E14-15SSR (77820)	P1 15.....	EA	1				*	*	*			18	P1
XDHZZ		CONNECTOR, RECEPTACLE, ELECTRICAL P2.... 11 CONT, 1 CONNECTOR MATING END, STRAIGHT SHAPE, 0.875 IN LG X 0.343 IN W X 0.546 IN H; SM11-20S (95238)	P2....	EA	1				*	*	*			18	P2
PACZZ	5920-280-3537	FUSE CARTRIDGE NO-REF-DESIG 100 AMP, 250 V MAX, 1.250 IN LG X 0.250 IN DIA; MS90078-12-1 (81349)	100 AMP, 250 V.....	EA	1				*	*	*		50		
XDCZZ		FUSE, CARTRIDGE NO-REF-DESIG 3.0 AMP,.... 250V MAX, 1.250 IN LG X 0.250 DIA; MS90078-12-1 (81349)	3.0 AMP,....	EA	1				*	*	*				
PAHZZ	5920-892-9395	FUSEHOLDER NO-REF-DESIG EXTRACTOR TYPE,.. 1.250 IN LG X 0.250 DIA O/A; FD1 (81349)	EXTRACTOR TYPE,..	EA	2				*	*	*		3		
XDOZZ		INSULATION SLEEVING ELECTRICAL NO-REF-.... DESIG PLAS BLK, 0.062 IN WALL THK, 2.031 IN LG O/A; 62BLACK (76545)	NO-REF-....	EA	4				*	*	*				
XDRZZ		JACK, TIP J2 STD PHONE TIP CONT..... ELEMENT CAP, PLASTIC RED, 1/4 M32 THD, 0.375 IN LG; MS16108-2D (81349)	J2 STD PHONE TIP CONT.....	EA	2				*	*	*			18	J2
XDHZZ		JACK, TIP J4 STD PHONE TIP CONT..... ELEMENT CAP, PLASTIC RED, 1/4 M32 THD, 0.375 IN LG; MS16108-2D (81349)	J4 STD PHONE TIP CONT.....	EA	REF				*	*	*			18	J4
XDHZZ		JACK, TIP J1 STD PHONE TIP CONT..... ELEMENT CAP PLASTIC, BLK, 1/4 M32 THD, CONTINUED	J1 STD PHONE TIP CONT.....	EA	29				*	*	*			18	J1

SECTION II

(1) SMR CODE	(2) FEDERAL STOCK NUMBER	(3) DESCRIPTION REFERENCE NUMBER & MFR CODE USABLE ON CODE		(4) UNIT OF MEAS	(5) QTY INC IN UNIT	(6) 30-DAY DS MAINT ALLOWANCE			(7) 30-DAY GS MAINT ALLOWANCE			(8) 1 YR ALW PER 100 EQUIP CNTGCT	(9) DEPOT MAINT ALW PER 100 EQUIP	(10) ILLUSTRATION	
						(a)	(b)	(c)	(a)	(b)	(c)			(a)	(b)
						1-20	21-50	51-100	1-20	21-50	51-100			FIGURE NO	ITEM NO
XDHZZ		CONTINUED													
XDHZZ		ELEMENT CAP PLASTIC, BLK, 1/4 M32 THD, 0.375 IN LG; MS16108-3D (81349) ABE		EA	REF				*	*	*			28	J30
XDHZZ		JACK, TIP J30 STD PHONE TIP CONT..... ELEMENT CAP PLASTIC, BLK, 1/4 M32 THD, 0.375 IN LG; MS16108-3D (81349) ABE		EA	REF				*	*	*			28	J31
XDHZZ		JACK, TIP J31 STD PHONE TIP CONT..... ELEMENT CAP PLASTIC, BLK, 1/4 M32 THD, 0.375 IN LG; MS16108-3D (81349) ABE		EA	REF				*	*	*			28	J32
XDHZZ		JACK, TIP J32 STD PHONE TIP CONT..... ELEMENT CAP PLASTIC, BLK, 1/4 M32 THD, 0.375 IN LG; MS16108-3D (81349) ABE		EA	REF				*	*	*			28	J34
XDHZZ		JACK, TIP J34 STD PHONE TIP CONT..... ELEMENT CAP PLASTIC, BLK, 1/4 M32 THD, 0.375 IN LG; MS16108-3D (81349) ABE		EA	REF				*	*	*			28	J35
XDHZZ		JACK, TIP J35 STD PHONE TIP CONT..... ELEMENT CAP PLASTIC, BLK, 1/4 M32 THD, 0.375 IN LG; MS16108-3D (81349) ABE		EA	REF				*	*	*			28	J36
XDHZZ		JACK, TIP J36 STD PHONE TIP CONT..... ELEMENT CAP PLASTIC, BLK, 1/4 M32 THD, 0.375 IN LG; MS16108-3D (81349) ABE		EA	REF				*	*	*			28	J37
XDHZZ		JACK, TIP J37 STD PHONE TIP CONT..... ELEMENT CAP PLASTIC, BLK, 1/4 M32 THD, 0.375 IN LG; MS16108-3D (81349) ABE		EA	REF				*	*	*			28	J38
XDHZZ		JACK, TIP J38 STD PHONE TIP CONT..... ELEMENT CAP PLASTIC, BLK, 1/4 M32 THD, 0.375 IN LG; MS16108-3D (81349) ABE		EA	REF				*	*	*			28	J39
XDHZZ		JACK, TIP J39 STD PHONE TIP CONT..... ELEMENT CAP PLASTIC, BLK, 1/4 M32 THD, 0.375 IN LG; MS16108-3D (81349) ABE		EA	REF				*	*	*			28	J40
XDHZZ		JACK, TIP J40 STD PHONE TIP CONT..... ELEMENT CAP PLASTIC, BLK, 1/4 M32 THD, 0.375 IN LG; MS16108-3D (81349) ABE		EA	REF				*	*	*			28	J41
XDHZZ		JACK, TIP J41 STD PHONE TIP CONT..... ELEMENT CAP PLASTIC, BLK, 1/4 M32 THD, 0.375 IN LG; MS16108-3D (81349) ABE		EA	REF				*	*	*			28	J41
PACZZ	5355-556-0145	MS91528-1K2B (81349) ABE KNDB NO-REF-DESIG SETSCREW TYPE, POINTER SHAPE, 1.050 IN LG X 0.715 W X 0.790 IN THK O/A; MS91528-1K2B (81349) ABE		EA	3				*	*	*		3		

SECTION II

(1) SMR CODE	(2) FEDERAL STOCK NUMBER	(3) DESCRIPTION REFERENCE NUMBER & MFR CODE USABLE ON CODE	(4) UNIT OF MEAS	(5) QTY INC IN UNIT	(6) 30-DAY DS MAINT ALLOWANCE			(7) 30-DAY GS MAINT ALLOWANCE			(8) 1 YR ALW PER 100 EQUIP CNTGCT	(9) DEPOT MAINT ALW PER 100 EQUIP	(10) ILLUSTRATION	
					(a)	(b)	(c)	(a)	(b)	(c)			(a)	(b)
					1-20	21-50	51-100	1-20	21-50	51-100			FIGURE NO	ITEM NO
XDCZZ		KNOB NO-REF-DESIG SETSCREW TYPE, POINTER SHAPE, 1.344 IN LG X 0.928 W X 1.027 THICK O/A;	EA	1				*	*	*				
PACZZ	6240-223-9100	MS91528-2K2D (81349) ABE LAMP, GLOW DS2 NEON GAS, 1/25 W, 1.187. MAX H O/A;	EA	1				*	*	*	100	28	DS2	
PACZZ	6240-155-8714	MS1 (81349) ABE LAMP, INCANDESCENT DS1 28V, 2-1/4 W,.... 0.17 AMP;	EA	1				*	*	*	50	26	DS1	
PAHZZ	6210-675-4352	MS25231-313 (81349) ABE LIGHT INDICATOR NO-REF-DESIG.....	EA	1				*	*	*	5			
PAHZZ	6210-655-2499	LH62BY2 (81349) ABE LIGHT INDICATOR NO-REF-DESIG.....	EA	1				*	*	*	5			
PAHZZ	6625-056-0267	MS90287-18 (81349) ABE PLUNGER NO-REF-DESIG STEEL, 2.250 IN LG. X 1.374 IN DIA, P/O EQUIPMENT SUPPLIED WITH TEST FIXTURE;	EA	1				*	*	*	2			
PAHZZ	5940-356-2493	2555081 (07187) ABE POST, BINDING NO-REF-DESIG CAP DATA..... NYLON, SCREW ACTION, 0.906 IN H O/A OFPOST ABOVE MTG SURFACE, 0.640 IN DIA O/A;	EA	2				*	*	*	1			
PAHZZ	5940-269-2219	DF308C (58474) ABE POST, BINDING NO-REF-DESIG CAP DATA..... NYLON, SCREW ACTION, 0.906 IN H O/A OF POST ABOVE MTG SURFACE;	EA	2				*	*	*	1			
XDHZZ		DF308C (58474) ABE RELAY SOLENOID K1 28 VDC, 10 AMP, RES. CURRENT RATING, 2.062 IN LG X 1.312 IN W X 1.875 IN H O/A;	EA	1				*	*	*		14	K1	
PAHZZ	5905-171-2006	MHYX4062 (02288) ABE RESISTOR, FIXED, COMPOSITION R6 270....	EA	1				*	*	*	3	14	R6	
PAHZZ	5905-104-8342	OHM PORMSPCT, 1/2 W; RC20GF271J (81349) ABE RESISTOR, FIXED, COMPOSITION R4 4300..	EA	2				*	*	*	3	14	R4	
PAHZZ	5905-104-8342	OHM PORMSPCT, 1/2 W; RC20GF432J (81349) ABE RESISTOR, FIXED, COMPOSITION R5 4300..	EA	REF				*	*	*		14	R5	
PAHZZ	5905-111-4753	OHM PORMSPCT, 1/2 W; RC20GF432J (81349) ABE RESISTOR, FIXED, COMPOSITION R12 24,000	EA	4				*	*	*	3	14	R12	
PAHZZ	5905-111-4753	OHM PORMSPCT, 1/2 W; RC20GF243J (81349) ABE RESISTOR, FIXED, COMPOSITION R13 24,000	EA	REF				*	*	*		14	R13	
PAHZZ	5905-111-4753	OHM PORMSPCT, 1/2 W; RC20GF243J (81349) ABE RESISTOR, FIXED, COMPOSITION R14 24,000	EA	REF				*	*	*		14	R14	
PAHZZ	5905-111-4753	OHM PORMSPCT, 1/2 W; RC20GF243J (81349) ABE RESISTOR, FIXED, COMPOSITION R15 24,000	EA	REF				*	*	*		14	R15	
PAHZZ	5905-553-2203	OHM PORMSPCT, 1/2 W; RC20GF243J (81349) ABE RESISTOR, FIXED, FILM R9..... MS35836-498 (81349) ABE	EA	1				*	*	*	3	14	R9	

SECTION II

SMR CODE	FEDERAL STOCK NUMBER	DESCRIPTION REFERENCE NUMBER & MFR CODE USABLE ON CODE	(4) UNIT OF MEAS	(5) QTY INC IN UNIT	(6) 30 DAY DS MAINT ALLOWANCE			(7) 30 DAY GS MAINT ALLOWANCE			(8) 1 YR ALW PER 100 EQUIP CNTGCT	(9) DEPOT MAINT ALW PER 100 EQUIP	(10) ILLUSTRATION	
					(a)	(b)	(c)	(a)	(b)	(c)			(a)	(b)
					1 20	21 50	51 100	1 20	21 50	51 100			FIGURE NO	ITEM NO
XDHZZ		RESISTOR, FIXED, FILM R11..... MS35836-478 (81349) ABE	EA	1				*	*	*		14	R11	
PAHZZ	5905-539-4565	RESISTOR, FIXED, FILM R8..... MS35836-506 (81349) ABE	EA	1				*	*	*	3	14	R8	
XDHZZ		RESISTOR, FIXED, FILM R16..... MS35836-503 (81349) ABE	EA	2				*	*	*		14	R16	
XDHZZ		RESISTOR, FIXED, FILM R17..... MS35836-503 (81349) ABE	EA	REF				*	*	*		14	R17	
PAHZZ	5905-299-0402	RESISTOR, VARIABLE R3..... RP101SD101KK (81349) ABE	EA	1				*	*	*	3	15	R3	
XDHZZ		RESISTOR, VARIABLE R2 WIREWOUND..... SLIDING BRUSH TYPE, 2 SECT, 1 AND 2 SECT 10,000 OHM PORM5PCT, 1W, 1.343 IN DIA X 0.720 IN D; CM29952-5L3AA9-1* ABE 96 (12697)	EA	1				*	*	*		15	R2	
XDHZZ		RESISTOR, VARIABLE R1 WIREWOUND..... SLIDING BRUSH TYPE, 2 SECT, 1 AND 2 SECT 7500HMS PORM5PCT, 1W, 1.343 IN DIA X 0.720 IN D; 4882 (11237) ABE	EA	1				*	*	*		15	R1	
PAHZZ	5905-636-7778	RESISTOR, FIXED, WIRE WOUND R7..... RM35V100 (81349) ABE	EA	1				*	*	*	3	14	R7	
PAHZZ	5961-553-4831	SEMICONDUCTOR, DEVICE, DIODE CR1..... SILICON 1.125 IN MX DIA X 0.300 MAX LG D/A; 1N646 (81349) ABE	EA	1				*	*	*	3	14	CR1	
PAHZZ	5961-846-7338	SEMICONDUCTOR, DEVICE, DIODE Q1..... GERM. NIUM 1.125 IN MAX DIA X 1.020 IN MAX D/A; 2N1358 (81349) ABE	EA	1				*	*	*	3	15	Q1	
XDHZZ		SHIELD, ELECTRICAL, CONNECTOR NO-REF-.... DESIG METALLIC MATL, RECTANGULAR SHAPE, 1.000 LG X 0.406 IN W X 1.656 IN H, D/A; SM11-20H (95238) ABE	EA	1				*	*	*				
XDHZZ		STUD, EXTENSION NO-REF-DESIG ALUMINUM... 10(0.190) IN M32 EXTERNAL THREAD, 10(0.190) IN M32 INTERNAL THREAD .500 IN DIA, 1.250 IN LG D/A; 2518916 (07187) ABE	EA	3				*	*	*				
XDHZZ		SWITCH, ROTARY S4 3 SECT, 4 POS, 6.... MOVING CONT 12 FIXED CONT, 6 POLES, 12 THROWS, 1.312 H X 1.895 IN LG X 1.187 IN W; 2503304-243 (07187) ABE	EA	1				*	*	*		15	S4	
PAHZZ	5930-655-1575	SWITCH, TOGGLE S1..... MS35058-22 (81349) ABE	EA	1				*	*	*	5	15	S1	
PAHZZ	5930-615-7883	SWITCH, TOGGLE S6..... MS25068-21 (81349) ABE	EA	1				*	*	*	5	15	S6	
PAHZZ	5930-655-1514	SWITCH, TOGGLE S3..... MS35058-22 (81349) ABE	EA	3				*	*	*	5	15	S3	
PAHZZ	5930-655-1514	SWITCH, TOGGLE S4..... MS35058-22 (81349) ABE	EA	REF				*	*	*		15	S4	

SECTION II

(1) SMR CODE	(2) FEDERAL STOCK NUMBER	(3) DESCRIPTION REFERENCE NUMBER & MFR CODE USABLE ON CODE		(4) UNIT OF MEAS	(5) QTY INC IN UNIT	(6) 30-DAY DS MAINT ALLOWANCE			(7) 30-DAY GS MAINT ALLOWANCE			(8) 1-YR ALW PER 100 EQUIP CNTGCT	(9) DEPOT MAINT ALW PER 100 EQUIP	(10) ILLUSTRATION	
						(a)	(b)	(c)	(a)	(b)	(c)			(a)	(b)
						1-20	21-50	51-100	1 20	21-50	51-100			FIGURE NO	ITEM NO
PAHZZ	5930-655-1514	SWITCH, TOGGLE S5.....	EA	REF				*	*	*			15	55	
XDHZZ		MS35058-22 (81349) A8E	EA	1				*	*	*			16	T1	
XDOZZ	5120-227-8095	TRANSFORMER, STEP-DOWN T1 PRI 115 V,...	EA	1				*	*	*		4			
PAOZZ		950-1311-400 (83003) A8E	EA	2				*	*	*					
PAHZZ	3110-1412-4326	ADAPTER, SHAFT NO-REF-DESIG .875 IN DIA,	EA	1				*	*	*			2	17	
XDOZZ		2518915 (07187) A8F	EA	1				*	*	*				17	
PAOZZ	6625-056-3717	ADAPTER, SOCKET WRENCH NO-REF-DESIG MALE	EA	1				*	*	*		3	16		
PAOZZ		MS16235-2 (81349) A8F	EA	4				*	*	*			4	19	
PAOZZ	6625-056-0247	BEARING, BALL; ANNULAR NO-REF-DESIG .750	EA	1				*	*	*		3	4	12	
XDOZZ		8539 (21335) A8F	EA	1				*	*	*					
PAOZZ	6625-056-0248	BEARING, BALL; ANNULAR NO-REF-DESIG.....	EA	1				*	*	*		3	4	12	
XDHZZ		2579689 (07187) A8F	EA	1				*	*	*					
PAHZZ	6680-052-8777	SINGLE ROW, RADIAL, .187 BORE DIA, .500 IN	EA	1				*	*	*		3	8		
XDOZZ		SR355462 (70854) A8F	EA	1				*	*	*					
PAOZZ	6680-052-8777	CLAMP DRUM ASSEMBLY NO-REF-DESIG P/O....	EA	1				*	*	*					
XDOZZ		EQUIPMENT FURNISHED WITH TEST FIXTURE:	EA	1				*	*	*					
PAOZZ	6680-052-8777	2579697 (07187) A8F	EA	1				*	*	*					
XDOZZ		CLAMP, GEAR 9 ALUM P/O EQUIP.	EA	1				*	*	*					
PAOZZ	6680-052-8777	FURN W/TEST FIXTURE;	EA	1				*	*	*					
XDOZZ		2579689 (07187) A8F	EA	1				*	*	*					
PAOZZ	6680-052-8777	CLAMP, SWIVEL NO-REF-DESIG STEEL,.....	EA	1				*	*	*					
XDOZZ		PROVIDES HOLDER INDICATOR ON TEST FIXTURE;	EA	1				*	*	*					
PAOZZ	6680-052-8777	2503174 (07187) A8F	EA	1				*	*	*					
XDOZZ		CONNECTOR, RECEPTACLE, ELECTRICAL NO-REF-	EA	1				*	*	*					
PAOZZ	6680-052-8777	DESIG & CONTACT, 1 CONNECTOR MATING END,	EA	1				*	*	*					
XDOZZ		.938 IN LG, .938 IN LG, .938 IN W, .743 IN	EA	1				*	*	*					
PAOZZ	6680-052-8777	H;	EA	1				*	*	*					
XDOZZ		BT02E10-6S (09922) A8F	EA	1				*	*	*					
PAOZZ	6680-052-8777	COUNTER, RECIPROCATING, FIXED MOUNTING....	EA	1				*	*	*					
XDOZZ		NO-REF-DESIG 5 FIGURES, .166 IN H, WHITE	EA	1				*	*	*					
PAOZZ	6680-052-8777	ON BLK 2.390 IN LG, 1.440 IN W, 1.281 IN	EA	1				*	*	*					
XDOZZ		H;	EA	1				*	*	*					
PAOZZ	6680-052-8777	1-112235 (79142) A8F	EA	1				*	*	*					
XDOZZ		DIAL, SCALE NO-REF-DESIG 0 TO 360CW;....	EA	1				*	*	*					
PAOZZ	6680-052-8777	610219 (00141) A8F	EA	1				*	*	*					
XDOZZ		DIAL, SCALE NO-REF-DESIG 0 TO 360CW, 3.0	EA	1				*	*	*					
PAOZZ	6680-052-8777	IN DIA, .062 IN THK;	EA	1				*	*	*					
XDOZZ		610316 (00141) A8F	EA	1				*	*	*					
PAOZZ	6680-052-8777	FITTING ASSEMBLY NO-REF-DESIG P/O EQUIP.	EA	1				*	*	*					
XDOZZ		F/W TEST FIXTURE;	EA	1				*	*	*					
PAOZZ	6680-052-8777	2579687 (07187) A8F	EA	1				*	*	*					
XDOZZ		GAGE, DIAL, INDICATOR NO-REF-DESIG.....	EA	1				*	*	*					
PAOZZ	6680-052-8777	2503139 (07187) A8F	EA	1				*	*	*					
XDOZZ		GEAR, ASSEMBLY, PINION NO-REF-DESIG C/O.	EA	1				*	*	*					
PAOZZ	6680-052-8777	GEAR, PEN AND HUB, P/O EQUIP F/W TEST	EA	1				*	*	*					
XDOZZ		FIXTURES;	EA	1				*	*	*					
PAOZZ	6680-052-8777	2555089-003 (07187) A8F	EA	1				*	*	*					
XDOZZ			EA	1				*	*	*					

SECTION II

(1) SMR CODE	(2) FEDERAL STOCK NUMBER	(3) DESCRIPTION REFERENCE NUMBER & MFR CODE USABLE ON CODE		(4) UNIT OF MEAS	(5) QTY INC IN UNIT	(6) 30-DAY DS MAINT ALLOWANCE			(7) 30 DAY GS MAINT ALLOWANCE			(8) 1 YR ALW PER 100 EQUIP CNTGCT	(9) DEPOT MAINT ALW PER 100 EQUIP	(10) ILLUSTRATION	
						(a)	(b)	(c)	(a)	(b)	(c)			(a)	(b)
						1-20	21 50	51 100	1-20	21 50	51 100			FIGURE NO	ITEM NO
PAOZZ	5815-056-0425	GEAR ASSEMBLY, PINION NO-REF-DESIG C/O..		EA	1				*	*	*		3	11	
		GEAR PEN AND HUB P/O EQUIP F/W TEST FIXTURES:													
XDOZZ		2555089-002 (07187) A8F GEAR, SPUR NO-REF-DESIG 1.875 IN DIA X..		EA	1				*	*	*				
		.500 IN LG TWO .127 IN DIA HOLES ON 1.125 IN MTG CENTERS:													
XDOZZ		2555082-001 (07187) A8F GEAR, ASSEMBLY, PINION NO-REF-DESIG C/O..		EA	1				*	*	*				
		GEAR PIN AND HUB:													
XDOZZ		2555089-001 (07187) A8F GEAR, SPUR NO-REF-DESIG 2.152 IN DIA BY..		EA	1				*	*	*				
		0.625 IN LG TWO 0.1257 IN DIA HOLES ON 1.125 IN MTG CENTERS:													
XDOZZ		2555086-001 (07187) A8F GEAR, SPUR NO-REF-DESIG 2.625 IN DIA BY..		EA	1				*	*	*				
		0.625 IN LG TWO .127 IN DIA HOLES ON 1.125 IN MTG CENTERS:													
XDOZZ		2555086-003 (56232) A8F GEAR, SPUR NO-REF-DESIG 2.375 IN DIA, BY		EA	1				*	*	*				
		0.625 IN LG, TWO 0.125 IN DIA HOLES ON 1.125 IN MTG CENTERS:													
XDOZZ		2555086-002 (07187) A8F GEAR, SPUR NO-REF-DESIG 2.375 IN DIA X..		EA	1				*	*	*				
		.500 IN LG TWO 1.27 DIA HOLES ON 1.125 MTG CENTERS:													
PAOZZ	6625-056-0252	2555082-003 (07187) A8F GEAR, SPUR NO-REF-DESIG 2.187 IN DIA X..		EA	1				*	*	*		3		
		0.050 IN LG TWO .127 IN DIA HOLES ON 1.125 MTG CENTERS:													
PAHZZ	6625-056-0253	2555082-002 (07187) A8F GUIDE BLOCK ASSEMBLY NO-REF-DESIG P/O...		EA	1				*	*	*		3		
		EQUIPMENT SUPPLIED WITH TEST FIXTURE:													
PAHZZ	6625-056-0258	2579690 (07187) A8F HEAD ASSEMBLY NO-REF-DESIG P/O EQUIPMENT		EA	1				*	*	*		3	11	
		SUPPLIED WITH TEST FIXTURES:													
XDHZZ		2579692 (07187) A8F JACK, TIP NO-REF-DESIG STD PHONE TIP....		EA	3				*	*	*				
		CONT ELEMENT CAP, PLASTIC RED, 1/4 M32 TMD, 0.375 IN LG:													
XDHZZ		MS16108-2D (81349) A8F JACK, TIP NO-REF-DESIG STD PHONE TIP....		EA	1				*	*	*				
		CONTACT ELEMENT, RED:													
XDOZZ		MS16108-2D (81349) A8F KEY, LOCKING NO-REF-DESIG STEEL.....		EA	1				*	*	*			4	34
		2554750 (07187) A8F KNOB NO-REF-DESIG 2.250 IN OD, .250 THK.		EA	1				*	*	*				
		O/A:													
XDOZZ		2555084 (07187) A8F NUT, PLAIN, KNURLED NO-REF-DESIG 3/4....		EA	2				*	*	*			8	
		(1.750) IN M16 NOM SIZE, CLASS 2B TMD;													
		J518917 (07187) A8F													

SECTION II

(1) SMR CODE	(2) FEDERAL STOCK NUMBER	(3) DESCRIPTION REFERENCE NUMBER & MFR CODE USABLE ON CODE		(4) UNIT OF MEAS	(5) QTY INC IN UNIT	(6) 30 DAY DS MAINT ALLOWANCE			(7) 30 DAY GS MAINT ALLOWANCE			(8) 1 YR ALW PER 100 EQUIP CNTGCT	(9) DEPOT MAINT ALW PER 100 EQUIP	(10) ILLUSTRATION	
						(a)	(b)	(c)	(a)	(b)	(c)			(a)	(b)
						1-20	21-50	51-100	1-20	21 50	51 100			FIGURE NO	ITEM NO
XDOZZ		PIN STRAIGHT, HEADLESS NO-REF-DESIG..... 3.875 IN LG O/A, .218 IN NOM DIA: 2518963 (07187) A8F	EA	1				*	*	*					
XDOZZ		PIN, STRAIGHT, THREADED NO-REF-DESIG..... 3.875 IN LG O/A, 3.500 IN LG GRIP, .218 IN DIA GRIP, 6M32 CLASS 2A THD: 2518964 (07187) A8F	EA	1				*	*	*					
XDHZZ		PLUNGER, SPRING LOADED NO-REF-DESIG .369 IN O/A LG, .164 IN DIA, 8 (164)M36 NFM2A THD FULL LENGTH: 850 (01226) A8F	EA	2				*	*	*					
PAHZZ	6625-056-0257	POINTER NO-REF-DESIG STEEL, P/O..... EQUIPMENT FURNISHED WITH TEST FIXTURE: 2555193-002 (07187) A8F	EA	1				*	*	*		3			
PAHZZ	6625-056-0256	POINTER NO-REF-DESIG STEEL, P/O..... EQUIPMENT FURN W/TEST FIX: 2555193-001 (07187) A8F	EA	1				*	*	*		3			
PAHZZ	5340-097-5238	RECEPTACLE, TURNLOCK FASTENER NO-REF-..... DESIG STEEL, CAD PL, 1.0 IN LG O/A, .750 IN BETWEEN CENTERS, .218 H, .156 IN STUD HOLE: 295741 (85735) A8F	EA	2				*	*	*		3	4	2	
PAHZZ	6625-056-0255	RING, BEARING RETAINING NO-REF-DESIG..... ALUMINUM 1.250 IN OD, .640 IN ID, .064 IN THK, P/O EQUIPMENT SUPPLIED WITH TEST FIXTURE: 264824-003 (07187) A8F	EA	1				*	*	*		3			
PAOZZ	6625-056-0259	RING, PULL NO-REF-DESIG .063 IN DIA..... STOCK, PROVIDES PULL HANDLE ON SPRING LOADED TEST EQUIPMENT: 2555194 (56232) A8F	EA	1				*	*	*		3			
PAOZZ	6625-056-0244	SCALE, INSTRUMENT NO-REF-DESIG RANGE 0.. TO 15 LBS: 2503186 (07187) A8F	EA	1				*	*	*		3	4	9	
PAOZZ	5305-754-4310	SCREW, EXTERNALLY RELIEVED BODY NO-REF-.. DESIG PANHEAD, SLOT DRIVE, 6(037) IN LG: 2518018 (07187) A8F	EA	2				*	*	*		3			
PAOZZ	5305-784-9406	SCREW, SPECIAL NO-REF-DESIG 3.562 IN LG, 6(138) IN M32 THD, .312 IN LG, HEXAGON SECTION, 250 IN ACROSS FLATS, SLOT DRIVE: 2518019 (07187) A8F	EA	2				*	*	*		3			
XBHZZ		SCREW, SHOULDER NO-REF-DESIG FLAT HD,.... SLOT DRIVE 1/4 M20, .485 LG THD: 2518914 (07187) A8F	EA	1				*	*	*		3			
PAHZZ	6625-056-0262	SHAFT, ASSEMBLY TEST FIXTURE NO-REF-DESIG .781 IN LG X 1.500 IN O/A DIA, PROVIDES DRIVE FROM SERVO TO DIAL: 2579693 (07187) A8F	EA	1				*	*	*		3			
XDHZZ		SHAFT, ASSEMBLY TEST FIXTURE NO-REF-DESIG 2.812 IN LG X 1.500 IN O/A DIA: 2579694 (07187) A8F	EA	1				*	*	*					
XDHZZ		SHAFT, SHOULDERED NO-REF-DESIG 2.250 IN. CONTINUED	EA	1				*	*	*					

SECTION II

(1) SMR CODE	(2) FEDERAL STOCK NUMBER	(3) DESCRIPTION REFERENCE NUMBER & MFR CODE USABLE ON CODE		(4) UNIT OF MEAS	(5) QTY INC IN UNIT	(6) 30-DAY DS MAINT ALLOWANCE			(7) 30-DAY GS MAINT ALLOWANCE			(8) 1 YR ALW PER 100 EQUIP CNTGCT	(9) DEPOT MAINT ALW PER 100 EQUIP	(10) ILLUSTRATION		
						(a)	(b)	(c)	(a)	(b)	(c)			(a)	(b)	
						1-20	21-50	51-100	1-20	21-50	51-100			FIGURE NO	ITEM NO	
XDCZZ		CONTINUED														
		LG, .625 IN DIA, .312 IN LG CHAMBER; A8F 2555192 (07187)		EA	2				*	*	*					
PAHZZ	6625-056-0254	SPACER, SLEEVE NO-REF-DESIG .191 IN NOM. ID, .281 IN NOM OD, .047 IN MAX M .043 IN MIN THK; A8F 0362011 (07187)		EA	1				*	*	*	3				
XDHZZ		SPRING, HELICAL, COMPRESSION NO-REF-DESIG STEEL, SAE 6150, .750 IN OD, 1.00 FREE LG, ACC, .375 IN SHAFT; A8F 2503133 (07187)		EA	2				*	*	*			4	28	
PAOZZ	5305-052-4786	STUD, ASSEMBLY, TURNLOCK FASTENER NO-REF- DESIG A8F ML295740-6 (85735)		EA	REF				*	*	*	*		4	22	
PAHZZ	5310-057-3463	THUMBSCREW NO-REF-DESIG STEEL, ZINC PL., .750 IN H OF HEAD, .843 IN W OF HEAD, 10 (.190) IN 24 SIZE DESIGNATION, NC CLASS A TME; A8F 2555195 (07187)		EA	2				*	*	*	5				
PAHZZ	5110-853-4538	WASHER, FLAT NO-REF-DESIG ROUND, .312 IN DIA HOLE .750 IN OD, .125 IN THK; A8F 2518918 (07187)		EA	1				*	*	*	3	4	4		
PAOZZ	5120-565-7706	WRENCH, TORQUE NO-REF-DESIG 3/8 IN MALE. DRIVE, 0-200 LB RATED CAP; A8F F200-1 (90947)		EA	1				*	*	*	3	4	5		
PAOZZ	5120-684-0404	WRENCH, TORQUE NO-REF-DESIG 3/8 IN MALE. DRIVE, 0-100 LB RATED CAP; A8F DR1001 (45225)		EA	1				*	*	*	3	4	6		
PAOZZ	5120-221-7971	WRENCH, TORQUE NO-REF-DESIG 3/8 IN MALE. DRIVE, 0-50 LBS RATED CAP; A8F F501 (58332)		EA	1				*	*	*	3	4	7		
PAOZZ	5120-618-4433	WRENCH, TORQUE NO-REF-DESIG 3/8 MALE.... DRIVE, 0-25 LB RATED CAPACITY; A8F GGGW00646 (81348)		EA	1				*	*	*	3	4	8		
		WRENCH, TORQUE NO-REF-DESIG 3/8 DRIVE... PO TO 10 LB CAPACITY; A8F F10-1 (58332)		EA	1				*	*	*	3	4			

SECTION IV

INDEX - FEDERAL STOCK NUMBER AND REFERENCE NUMBER
CROSS-REFERENCE TO FIGURE AND ITEM NUMBER

STOCK NUMBER	FIGURE NO.	ITEM NO.	STOCK NUMBER	FIGURE NO.	ITEM NO.
3110-142-4326	17		5930-655-1514	15	S3
3110-142-4326	4	7	5930-655-1514	15	S4
5120-227-8095			5930-655-1514	15	S5
5120-585-7706	4	5	5930-655-1575	15	S1
5120-618-4433	4	8	5940-230-1196		
5120-684-0404	4	6	5940-269-2219		
5120-853-4538	4	4	5940-356-2493		
5305-052-4786	4	22	5961-553-4831	14	CRI
5305-754-4310			5961-846-7338	15	Q1
5305-784-9406			6210-655-2499		
5310-057-3463			6210-675-4352		
5340-097-5238	4	2	6240-155-8714	28	DS1
5355-556-0145			6240-223-9100	28	DS2
5815-056-0425	11		6625-056-0244	4	9
5905-104-8342	14	R4	6625-056-0247	4	19
5905-104-8342	14	R5	6625-056-0248	4	12
5905-111-4753	14	RI2	6625-056-0252		
5905-111-4753	14	RI3	6625-056-0253		
5905-111-4753	14	RI4	6625-056-0254		
5905-111-4753	14	RI5	6625-056-0255		
5905-171-2006	14	R6	6625-056-0256		
5905-299-0402	15	R3	6625-056-0257		
			6625-056-0258	11	
			6625-056-0259		
5905-539-4565	14	R8	6625-056-0262		
5905-553-2203	14	R9	6625-056-0267		
5905-636-7778	14	R7	6625-056-3717	16	
5920-280-3537			6680-052-8777	8	
5920-892-9395					
5930-615-7883	15	S6			

REFERENCE NO.	MFR CODE	FIG. NO.	ITEM NO.	REFERENCE NO.	MFR CODE	FIG. NO.	ITEM NO.
BT02E10-6S	09922			DR1001	45225	4	5
B50	01226			FD1	81349		
B539	21335	17		F10-1	58332	4	8
CE410250K	81349	14	C1	F200-1	90947	4	4
CM29952-5L3AA9-196	12697	15	R2	F501	58332	4	6
DF30BC	58474			GGGW00686	81348	4	7
DF30RC	58474			LH62BY2	81349		

SECTION IV

REFERENCE NO.	MFR CODE	FIG. NO.	ITEM NO.	REFERENCE NO.	MFR CODE	FIG. NO.	ITEM NO.
MHYX4062	02288	14	K1	SM11-20H	95238		
MS16108	81349	28	J38	SM11-20S	95238	18	P2
MS16108-2D	81349			SM14-20PSKGDHC	95238	18	P3
MS16108-2D	81349	18	J2	SM14-20SSKGPB	95238	18	P4
MS16108-2D	81349	18	J4	SR3SS4G2	70854	17	
MS16108-3D	81349	18	J1	WL295740-6	85735	4	28
MS16108-3D	81349	18	J3	0362011	07187		
MS16108-3D	81349	28	J18	1-112235	79142	8	
MS16108-3D	81349	28	J19	1N646	81349	14	CRI
MS16108-3D	81349	28	J20	2N1358	81349	15	Q1
MS16108-3D	81349	28	J21	2503133	07187		
MS16108-3D	81349	28	J22	2503139	07187	9	
MS16108-3D	81349	28	J23	2503174	07187	4	12
MS16108-3D	81349	28	J24	2503186	07187	4	9
MS16108-3D	81349	28	J26	2503304-243	07187	15	S4
MS16108-3D	81349	28	J27	2518018	07187		
MS16108-3D	81349	28	J28	2518019	07187		
MS16108-3D	81349	28	J29	2518914	07187		
MS16108-3D	81349	28	J30	2518915	07187		
MS16108-3D	81349	28	J31	2518916	07187		
MS16108-3D	81349	28	J32	2518917	07187	8	
MS16108-3D	81349	28	J33	2518918	07187		
MS16108-3D	81349	28	J34	2518963	07187		
MS16108-3D	81349	28	J35	2518964	07187		
MS16108-3D	81349	28	J36	2554750	07187	4	34
MS16108-3D	81349	28	J37	2555081	07187		
MS16108-3D	81349	28	J39	2555082-001	07187		
MS16108-3D	81349	28	J40	2555082-002	07187		
MS16108-3D	81349	28	J41	2555082-003	07187		
MS16235-2	81349			2555084	07187		
MS25068-21	81349	15	S6	2555086-001	07187		
MS25231-313	81349	28	DS1	2555086-002	07187		
MS35058-22	81349	15	S3	2555086-003	56232		
MS35058-22	81349	15	S4	2555089-001	07187		
MS35058-22	81349	15	S5	2555089-002	07187	11	
MS35059-22	81349	15	S1	2555089-003	07187	11	
MS35836-478	81349	14	R11	2555192	07187		
MS35836-498	81349	14	R9	2555193-001	07187		
MS35836-503	81349	14	R16	2555193-002	07187		
MS35836-503	81349	14	R17	2555194	56232		
MS35836-506	81349	14	R8	2555195	07187	4	22
MS90078-12-1	81349			2579687	07187		
MS90287-18	81349			2579689	07187	4	19
MS91528-1K28	81349			2579690	07187		
MS91528-2K2D	81349			2579692	07187	11	
NE51	81349	28	DS2	2579693	07187		
PT06E10-6SSR	96906	18	P5	2579694	07187		
PT06E14-15SSR	77820	18	P1	2579697	07187	16	
RC20GF243J	81349	14	R12	264824-003	07187		
RC20GF243J	81349	14	R13	295741	85735	4	2
RC20GF243J	81349	14	R14	4882	11237	15	R1
RC20GF243J	81349	14	R15	60C	76545		
RC20GFL271J	81349	14	R6	610219	00141	7	
RC20GF432J	81349	14	R4	610316	00141	7	
RC20GF432J	81349	14	R5	62BLACK	76545		
RP101SD101KK	81349	15	K3	950-1311-400	83003	14	T1
RW35V100	81349	14	R7				

By Order of the Secretary of the Army:

Official:

VERNE L. BOWERS
Major General, United States Army
The Adjutant General

FRED C. WEYAND
General, United States Army
Chief of Staff

Distribution:

To be distributed in accordance with DA Form 12-36, (qty rqr block no.233) Direct and General **Support** maintenance requirements for AN-ASW-12.

* U. S. GOVERNMENT PRINTING OFFICE- 1975-665139/651

END
01-03-83

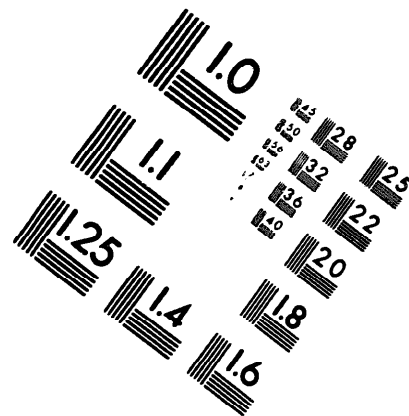
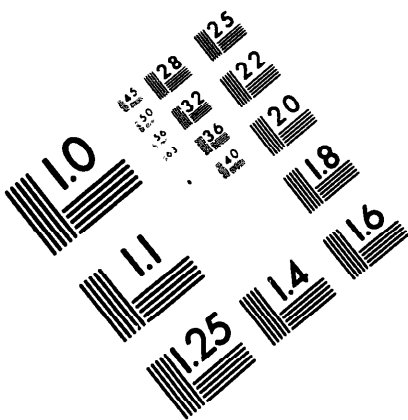
DATE





DEPARTMENT OF THE ARMY

MICROFORM
TEST TARGET



150 MM

1.0 mm e= 81 mm

ABCDEFGHIJKLMNQRSTUUVWXYZ1234567890
abcdefghijklmnopqrstuvwxyz\$c£/%# 1/2 1/4 3/4 —=+ x&@*

1.5 mm (e= 1.09 mm)

ABCDEFGHIJKLMNQRSTUUVWXYZ1234567890
abcdefghijklmnopqrstuvwxyz\$c£/%# 1/2 1/4 3/4 —=+ x&@*

2.0 mm (e= 1.37 mm)

ABCDEFGHIJKLMNQRSTUUVWXYZ
abcdefghijklmnopqrstuvwxyz
1234567890\$c£/%# 1/2 1/4 3/4 —=+ x&@*

2.5 mm (e= 1.77 mm)

ABCDEFGHIJKLMNQRSTUUVWXYZ
abcdefghijklmnopqrstuvwxyz
1234567890\$c£/%# 1/2 1/4 3/4 —=+ x&@*

1.0 mm e= 81 mm

ABCDEFGHIJKLMNQRSTUUVWXYZ1234567890
abcdefghijklmnopqrstuvwxyz\$c£/%# 1/2 1/4 3/4 —=+ x&@*

1.5 mm (e= 1.09 mm)

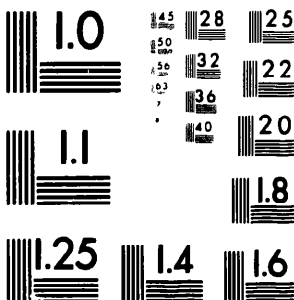
ABCDEFGHIJKLMNQRSTUUVWXYZ1234567890
abcdefghijklmnopqrstuvwxyz\$c£/%# 1/2 1/4 3/4 —=+ x&@*

2.0 mm (e= 1.37 mm)

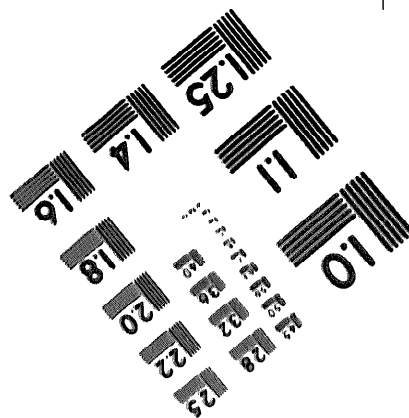
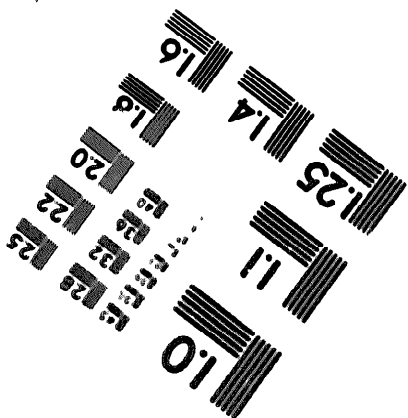
ABCDEFGHIJKLMNQRSTUUVWXYZ
abcdefghijklmnopqrstuvwxyz
1234567890\$c£/%# 1/2 1/4 3/4 —=+ x&@*

2.5 mm (e= 1.77 mm)

ABCDEFGHIJKLMNQRSTUUVWXYZ
abcdefghijklmnopqrstuvwxyz
1234567890\$c£/%# 1/2 1/4 3/4 —=+ x&@*



200 MM



250 MM